

EUROPEAN COCOA ASSOCIATION aisbl

Boulevard du Souverain 207 box 9 * B – 1160 Brussels

Tel: (+32)2 662 00 06 * Fax: (+32)2 662 00 08 * E-mail: info@eurococoa.com

Isabelle Adam - Secretary General

Date: January 14th, 2010

EUROPEAN COCOA BEAN USAGE
(in tons – processed beans, i.e. ground and expelled)

ECA PUBLICATION

Quarterly Comparison (net change from prior year)

	Q4 %	Q3 %	Q2 %	Q1 %	YTD %
2009/2008	100.6	98.9	88.7	88.9	94.3
2008/2007	100.1	99.3	101.7	104.7	101.4
2007/2006	102.9	108.0	103.4	104.4	104.7
2006/2005	106.9	104.3	105.7	109.9	106.7
2005/2004	105.2	108.6	108.6	100.9	105.8
2004/2003	99.4	102.6	100.9	105.9	102.1
2003/2002	107.3	103.2	104.9	104.3	104.9
2002/2001	98.5	94.2	90.7	86.0	92.2
2001/2000	93.3	96.8	103.0	105.2	99.4
2000/1999	107.5	114.3	105.2	111.8	109.6

Quarterly Results

	Q4	Q3	Q2	Q1	YTD	12 mth totals (moving average)
2009	351,316	344,832	291,763	315,177	1,303,088	1,303,088
2008	349,351	348,501	328,920	354,571	1,381,343	1,381,343
2007	348,901	351,040	323,353	338,495	1,361,789	1,361,789
2006	338,922	324,903	312,817	324,173	1,300,815	1,300,815
2005	317,000	311,627	295,926	295,061	1,219,614	1,219,614
2004	301,214	287,040	272,570	292,367	1,153,191	1,153,191
2003	302,988	279,675	270,197	276,070	1,128,930	1,128,930
2002	282,501	271,041	257,570	264,755	1,075,867	1,075,867
2001	286,947	287,709	284,048	307,764	1,166,468	1,166,468
2000	307,473	297,164	275,663	292,628	1,172,928	1,172,928
1999	285,952	259,907	262,073	261,792	1,069,724	1,069,724

YTD Comparison (net change from prior year)

through	Q4 %	Q3 %	Q2 %	Q1 %
2009/2008	94.3	92.2	88.8	88.9
2008/2007	101.4	101.9	103.3	104.7
2007/2006	104.7	105.3	103.9	104.4
2006/2005	106.7	106.6	107.8	109.9
2005/2004	105.8	105.9	104.6	100.9
2004/2003	102.1	103.2	103.4	105.9
2003/2002	104.9	104.1	104.6	104.3
2002/2001	92.2	90.2	88.3	86.0
2001/2000	99.4	101.6	104.1	105.2
2000/1999	109.6	110.4	108.5	111.8

Next update: April 2010

Geographical Coverage: European Union (15 original countries) & Switzerland

Number of Participants: Currently 27

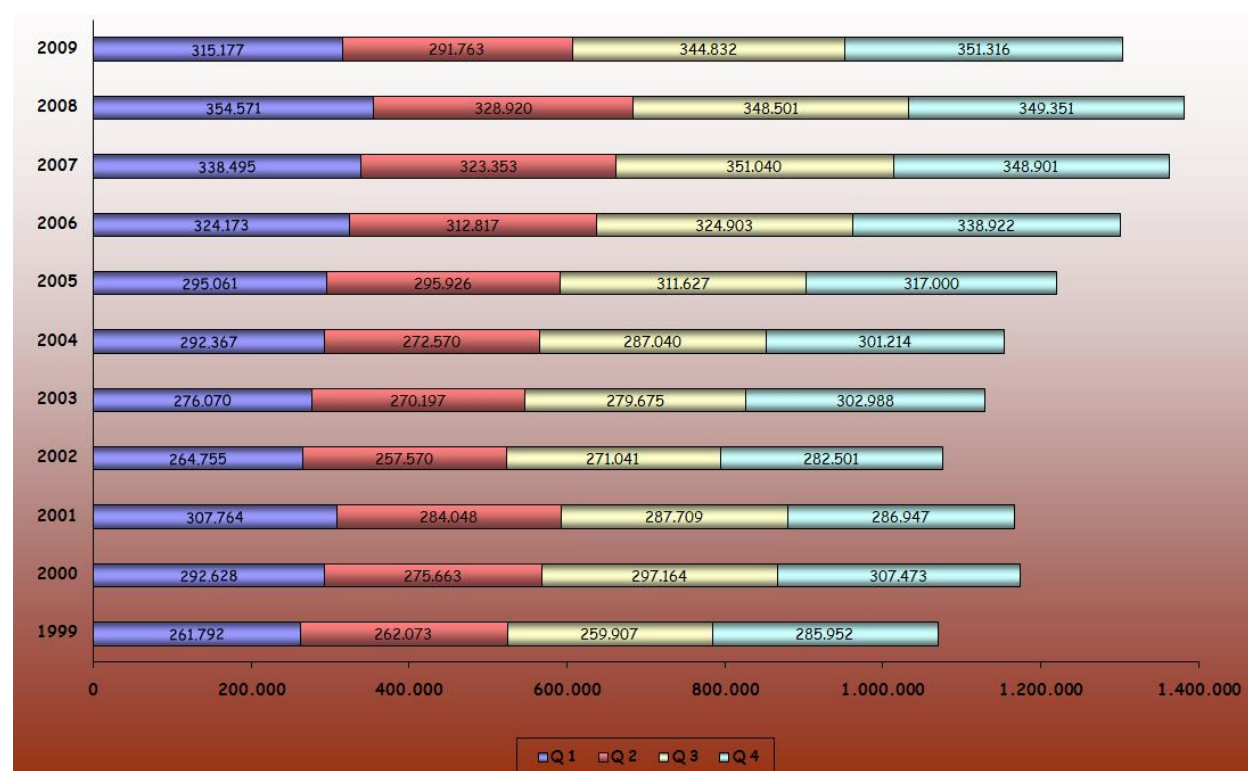
Reporting Companies: All companies report their total (group) bean usage

ECA grinding members: ADM Cocoa – Barry-Callebaut – Delfi Cocoa Europe – ECOM/Dutch Cocoa – Gerkens Cacao (Cargill)

Bean processors (grinders and/or expellers):

Cadbury– Cioccolato Peyrano – Euromar – Ferrero – Fuchs & Hoffmann – Hachez – Herza – Icam – Kessko – Kraft Foods – Lindt (Italy) – Ludwig – Majani – Natra – Nederland - Nestle – Schokinag – Schwartauer Werke (KVB) – Stabilimento Testa– Storck – Weinrich – Toms

Source: SSZ (Studiecentrum Snacks en Zoetwaren), Zeist, the Netherlands¹



¹ Please note amended Q3 figure (vs 14 October 2009 publication) based on recent correction by one reportee.